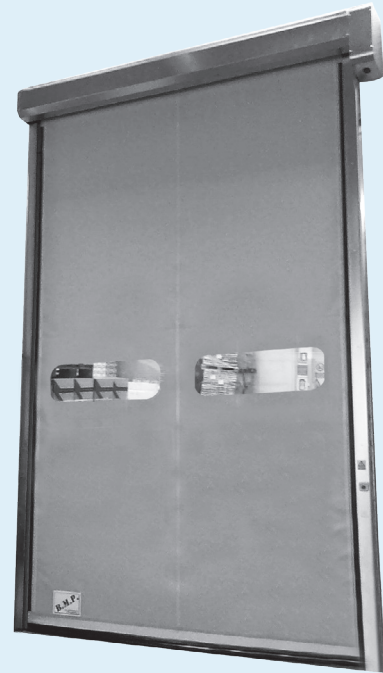


BMP Model Dynamicroll

- *Up to 100" a second opening speed*
- *Soft bottom edge*
- *Breakaway*
- *Self-repairing*
- *Wireless safety edge*
- *Prewired control panel*



AMBIENT AND COOLER DOOR SPECIFICATIONS:

Supply where indicated on plans Jamison BMP Model Dynamicroll high speed self-repairing fabric roll up door for all temperatures from ambient to cooler.

Roll up door side frames and header to be standard galvanized steel.

Standard UL approved control panel to be a painted steel enclosure with window allowing vision of internal LED readout. Control panel uses a proprietary circuit board with inverter. Standard opening speed is up to 100" a second based on size. Standard closing speed is 32" per second. Circuit board has LED lighted display showing operation modes and information codes.

Door curtain is made of reinforced PVC, with flexible weighted soft bottom edge. The edge of curtain has continuous injection molded teeth that then move up and down in a self-lubricating polyethylene track attached to structural galvanized side frames.

The drum and shafts are made of galvanized steel. Both the drum and the motor have galvanized covers.

The standard motor is IP 54 2HP. The incremental encoder mounted is attached to the end of the drum shaft.

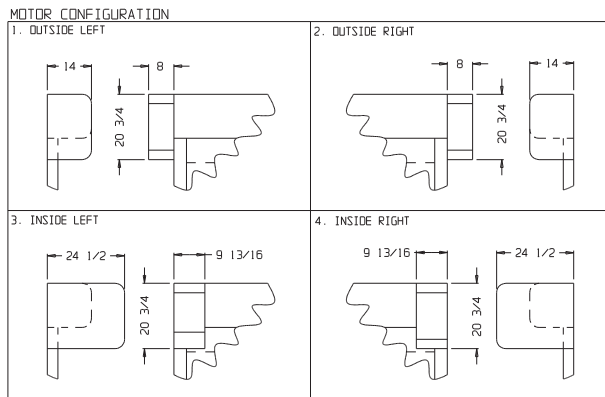
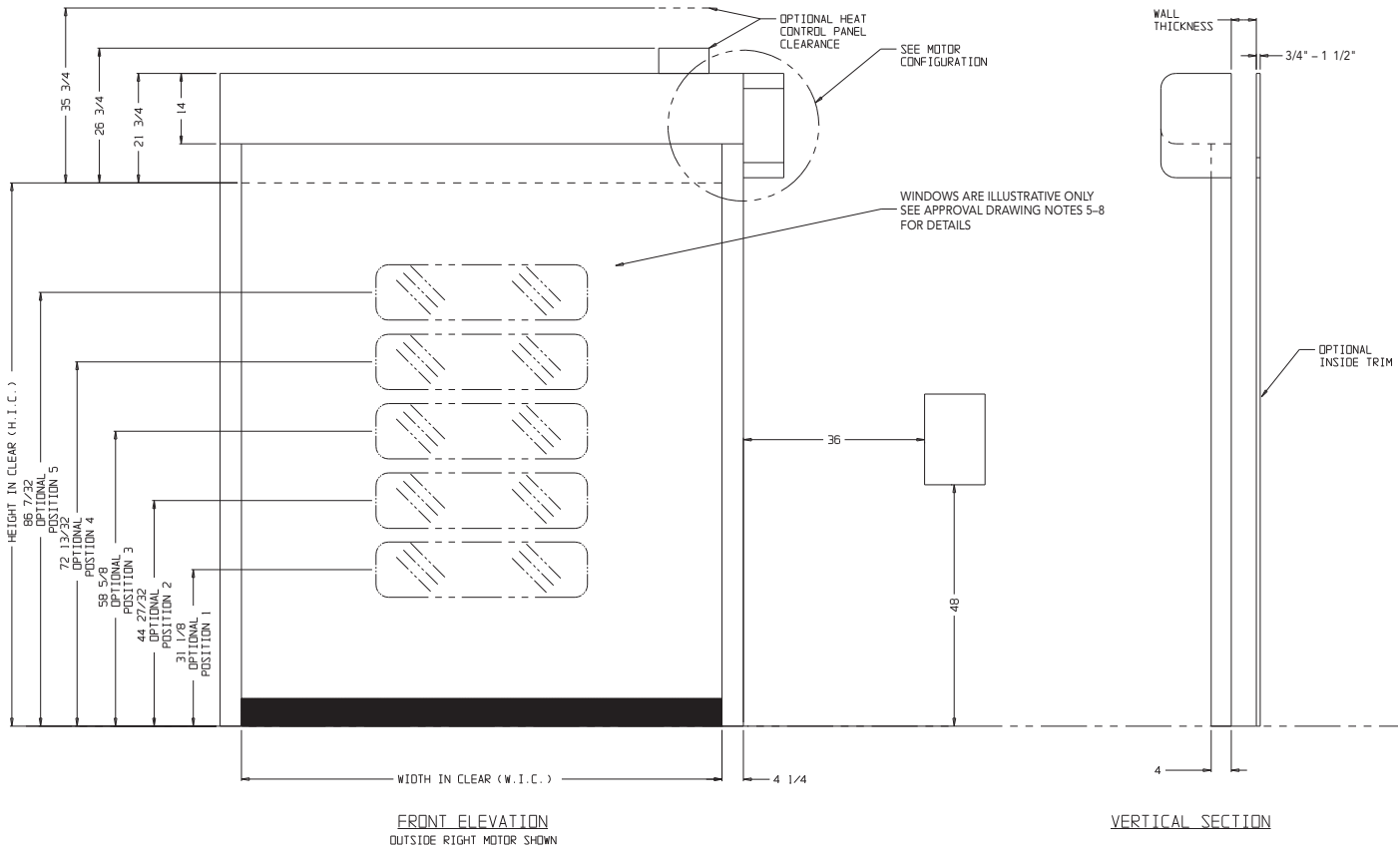
An infrared photocell NPN, IP67 is installed on the inside of the side guide and detects the presence of a pedestrian or vehicle.

A bottom edge detector reverses the door when it hits an obstacle during the closing cycle. This detector can be either a wireless safety edge or a sensor that determines whether the fabric can unroll properly.

Power to be 208, 230, or 480 volt AC, 60 Hertz, 3 phase. Circuit breakers to be provided by other. Complete door assembly to be ready for connection to power. (Architect to designate responsibility for field wiring.)

OPTIONS: (SPECIFY which options are desired)

1. Side frames, header, covers can be Stainless steel.
2. Control panel available in Stainless Nema 4x.
3. Control wiring prewired to control panel.
4. Wall attachment fastenings.
5. Activation devices.
6. View windows.
7. 1/8" insulated reinforced PVC.
8. Heated side frames.
9. T-Cut emergency egress.
10. UPS battery backup.
11. Jambs and/or inside trims.



Warranty:
Provide standard manufacturer warranty for a minimum period of three (3) years from the date of shipment.

INSTALLATION POINTS:

1. Install roll up door, hardware, and electrical components in strict accordance with Architect's drawings and specifications and the door manufacturer's written instructions.
2. Complete installation, operating, and maintenance instructions shall be supplied for each door by manufacturer.
3. Manufacturer can furnish most types of installation hardware, such as: lag screws, machine bolts, carriage bolts or all thread. Trim, floor clips, crush plates, and anchor bolts are also available.
4. Install side frames plumb and square, in correct locations indicated on drawings and with a maximum diagonal distortion of 1/4" over height of doorway. Ensure header is securely and rigidly anchored to adjacent construction.



Jamison Door Company • P.O. Box 70 • Hagerstown, MD 21741-0070
 Call Toll Free • 1-800-532-3667 or 301-733-3100
 FAX: 240-329-5155
 INTERNET: <http://www.jamisondoor.com>
 E-MAIL: contact@jamisondoor.com